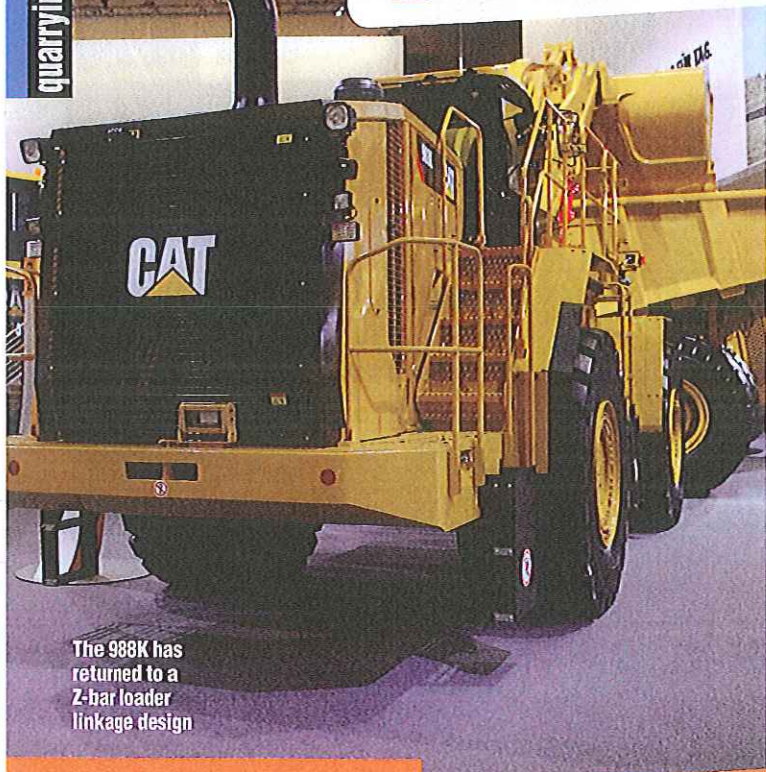


# Reduced fuel consumption for CAT'S STAGE IV

quarrying & aggregates



The 988K has returned to a Z-bar loader linkage design

Caterpillar's seventh generation 988 wheeled loader – the 988K – is powered by a Tier 4 Final/Stage IV Cat C18 ACERT diesel engine, featuring selective catalytic reduction and delivering 362kW.

The engine is said to deliver a 20% fuel efficiency benefit compared to the 988H, thanks in part to an ECO mode with on-demand throttle, auto idle and engine idle kickdown/auto resume system.

The 50tonne machine moves away from its predecessor's monoboom loader arm design in favour of a Z-bar linkage. The solid steel arms are available in a standard or high-lift configuration and the design shortens the overall length of the machine, making it more suitable for smaller quarry applications.

With Cat impeller clutch

torque converter, with lock-up clutch, the machine has direct drive to boost fuel economy and cut cycle times. The system also allows operators to balance rimpull and hydraulic power for maximum loading efficiency.

An automatic retarding control (ARC) uses an optional compression brake to limit travel speeds and reduce service brake wear.

A new cab includes Cat's next generation vital information management system (VIMS) to provide real-time fuel consumption and fuel efficiency readings, as well as material loaded per litre of fuel.

In-cab sound levels have been greatly reduced, to just 71.1dB(A) and the cab comes as standard with automatic climate control. Bucket capacities range from 6.4-7.7m<sup>3</sup> and the 988K has a rated payload of 11.3tonnes. [www.cat.com](http://www.cat.com)

## GO! is the word from Rubble Master

Star attraction on the Rubble Master stand at bauma was the RM100 GO! tracked mobile impact crusher.

The machine has a throughput capacity of 200t/hr and has a 900x750mm inlet opening, three rotor speeds and is available with two, three or four hammers.

The 29tonne John Deere-powered machine has a 3m loading height, an asymmetric vibro feeder and a pre-screen measuring 1,500x900mm. It is fitted with a 1m-wide main discharge belt and has a stockpiling height of 3.3m. Screened discharge is via a 500mm-wide belt with a 2.4m discharge height.

Set up with Rubblemaster's GO! Machines, the operator simply pushes the button and the machine is available for work almost immediately, while standardised remote control allows users to operate all relevant functions.

[www.rubblemaster.com](http://www.rubblemaster.com)

## ROCKMORE'S A-SERIES HAMMERS

Rockmore International introduced its new A-series down-the-hole (DTH) hammers at bauma.

The ROK 600A and 650A have been added to the company's ROK range of hammers. The new 6inch-class (152mm) DTH hammers are the first models in the new A-class series.

The A hammers feature new component designs that are said to demonstrate better performance and penetration rates suited to smaller compressors.

"We are committed to developing new DTH hammer solutions that increase productivity and reduce drilling operating costs," said Pejman Eghdami, executive vice president of Rockmore International.

"Our new A Series line incorporates technological advancements that allow the hammers to be compatible with a wider range of compressors. This has been achieved by lowering air consumption rates and instilling higher efficiency levels."

The piston and wear sleeve components have been redesigned

to increase airflow efficiency at lower air volumes for the hammer, resulting in air consumption dropping to 26.5m<sup>3</sup>/minute at 24.1bar, while increasing penetration rates and further improving productivity and performance.

The new A Series hammers are

targeted for DTH bits to drill from 155mm to 178mm in mining, construction, quarry and water-well applications. Impact power is generated from a solid piston design that is made from advanced materials then case hardened.

[www.rockmore-intl.com](http://www.rockmore-intl.com)

