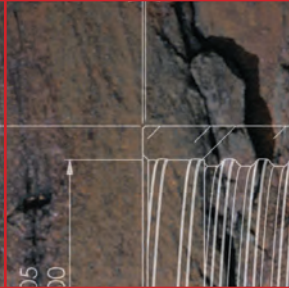
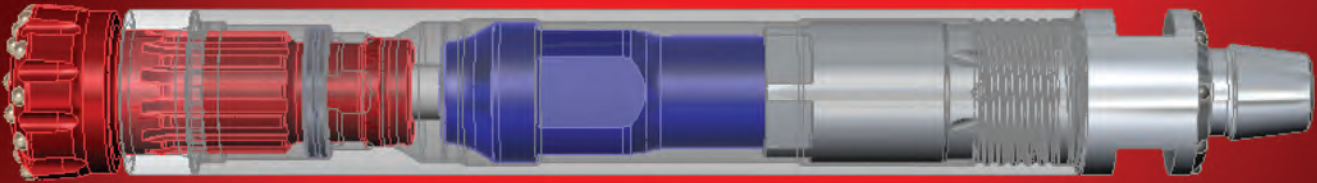
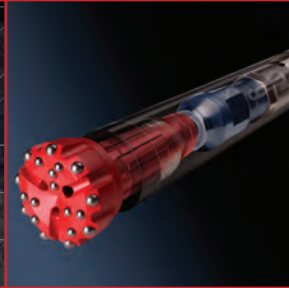
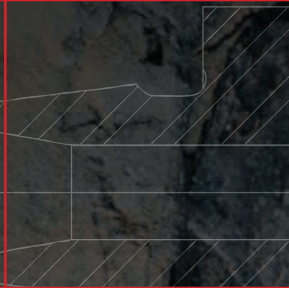


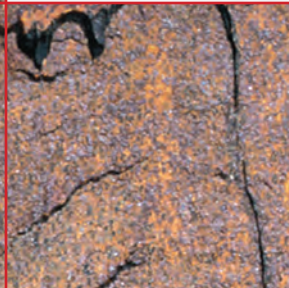
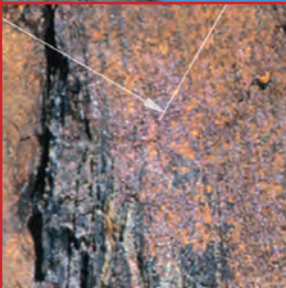
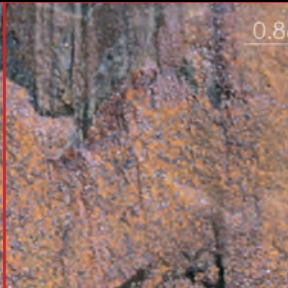
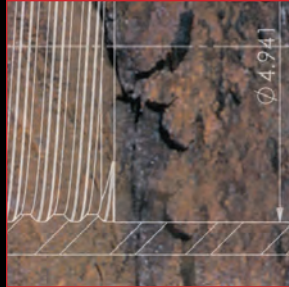
**DRILL MORE WITH ROCKMORE**

Ø 4.72

3.48  
TYP 1.97  
0.74  
0.709



**DOWN-THE-HOLE (DTH)  
DRILLING TOOLS**



**R O C K M O R E  
I N T E R N A T I O N A L**

1.763 12.795 6.427 1.518

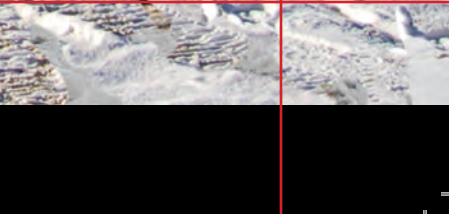
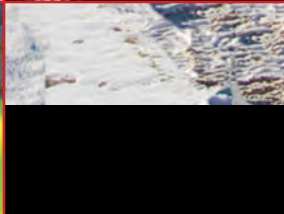
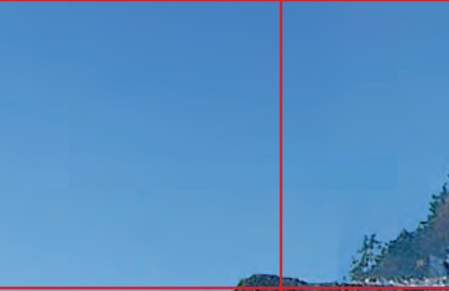
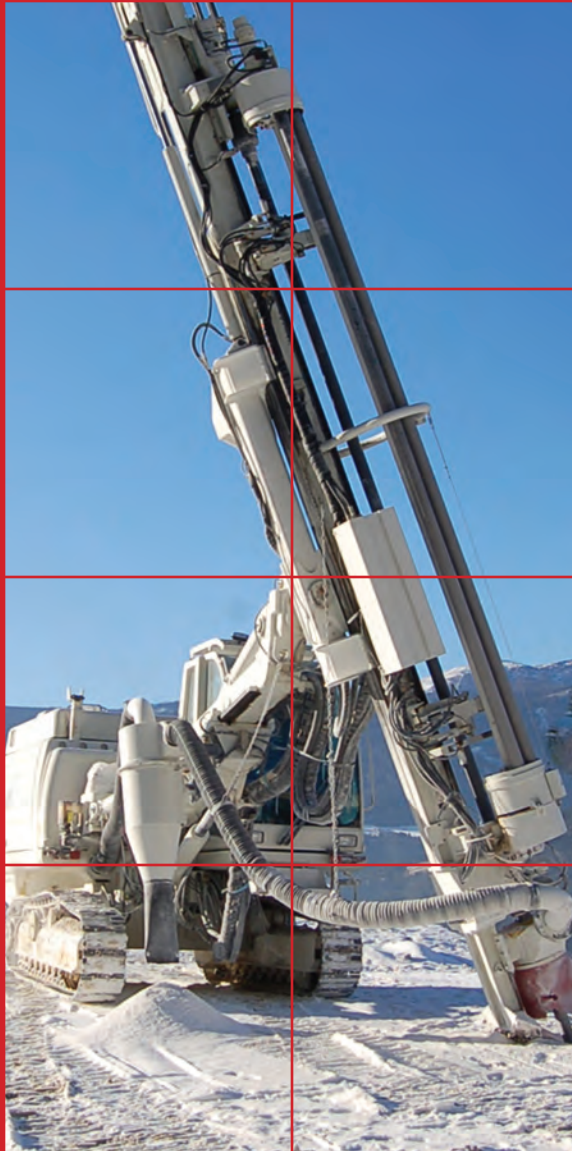
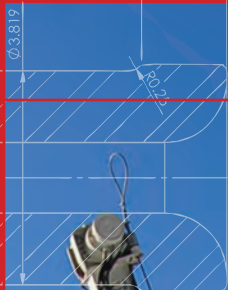
## ROCKMORE: Global in Scope, Personal in Practice

For more than 60 years, Rockmore International has developed a distinctly streamlined, user-focused way of serving our broad range of customers. With manufacturing centers in two hemispheres and distribution centers on nearly every continent, we ensure that our worldwide clients have quick access to our service, manufacturing and marketing expertise. Whether your business is civil engineering, mining or water-well drilling, chances are, Rockmore has had experience with a company just like yours.

Rockmore has become the industry's performance leader in tools that withstand the toughest rock drilling demands. Our commitment to this degree of quality starts with extensive R & D. Rockmore includes some of the sharpest minds in the rock-drilling industry – a team of product designers, metallurgical experts and tool specialists who are continually advancing drilling technology for the entire industry.

Our drilling tools are developed based on the continuous input of operators and contractors working in the field. That's why our products exceed industry specifications for performance and safety.

When you work with Rockmore International, we are committed to the success of your project.



Introducing  
Rockmore's High-  
Performance DTH  
Hammers with  
SonicFlow Technology  
- the ROK Series

Optimal energy transfer is essential to DTH drilling efficiency - how much compressed air power is delivered to the bit. That's why we have revolutionized air flow management in the new ROK series high-performance DTH hammers. Our patented SonicFlow technology minimizes backflow and turbulence, enabling the piston to hit the bit harder and with greater frequency. That means increased efficiency, more power, faster penetration. And the streamlined design means fewer parts and easier maintenance. So for greater productivity, get ready to ROK.

Smart design,  
fewer parts, easier  
maintenance

New piston  
geometry for  
higher impact  
energy

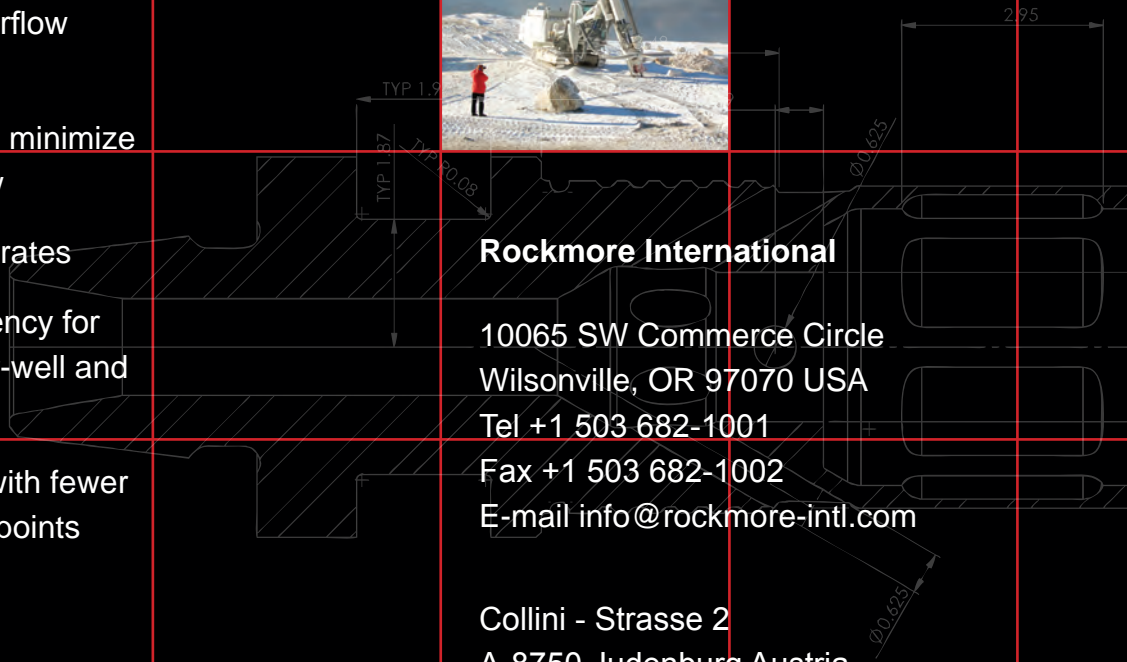
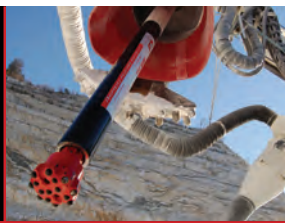
Optimized air  
channels deliver  
more energy to  
the piston

Top Sub with  
radial port  
design reduces  
turbulence and  
increases airflow

**SONICFLOW**

## THE ROCKMORE DTH SOLUTION

- High performance design delivers more energy to the piston
- Integrated SonicFlow Technology increases airflow efficiency
- Patented innovations minimize turbulence and backflow
- Superior penetration rates
- Greater drilling efficiency for mining, quarrying, water-well and gas fields
- Streamlined design with fewer components, less wear points
- Easy assembly and maintenance
- Advanced materials: the toughest steel and carbide available
- Extended service life



### Rockmore International

10065 SW Commerce Circle  
Wilsonville, OR 97070 USA

Tel +1 503 682-1001

Fax +1 503 682-1002

E-mail [info@rockmore-intl.com](mailto:info@rockmore-intl.com)

Collini - Strasse 2  
A-8750 Judenburg Austria

Tel +43 3572 86300

Fax +43 3572 84179

E-mail: [austria@rockmore-intl.at](mailto:austria@rockmore-intl.at)

[www.rockmore-intl.com](http://www.rockmore-intl.com)



®



Available on the  
App Store

**R O C K M O R E**  
I N T E R N A T I O N A L

Find us on  
Facebook

6/7/12