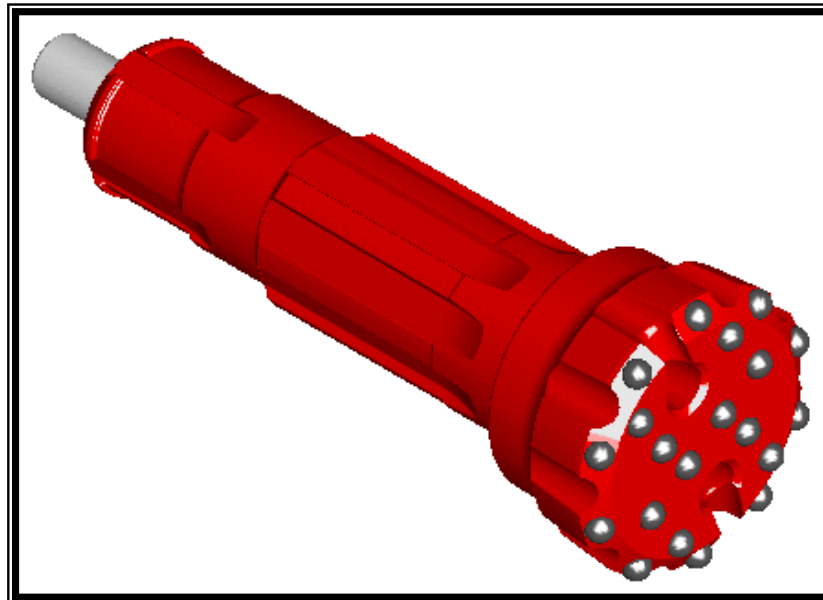


Multi-Dome Design Carbide



Mining



Water-Well

Quarrying

Construction

Multi-Dome Carbide in ROCKMORE DTH Bits Feature:

- Greater insert life due to unique dual diameter
- Faster penetration rates from increased dome height
- Deeper penetration rates imparted from aggressive profile design
- Better bit flushing due to optimized rock chip geometry

